



Instructions for ACME Sound + light Modules

Use caution when handling bare electronic circuits. Today's micro circuitry can be damaged by ESD. ESD means Electro Static Discharge. This is what occurs when you walk across a carpet and touch a piece of metal and get a shock. Before touching the circuit board, you should touch something that is grounded to discharge any static electricity you may be storing.

Modules can be placed under layouts, in buildings, or onboard trains.

Maximum time before looping is 60 seconds depending on the sound scenario on your module.

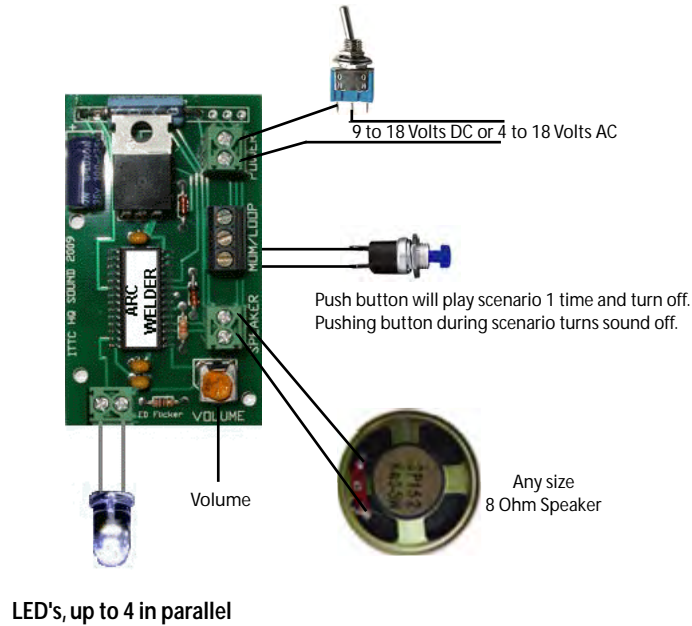
Bringing life to Model Engineering.

Warranty: 90 days

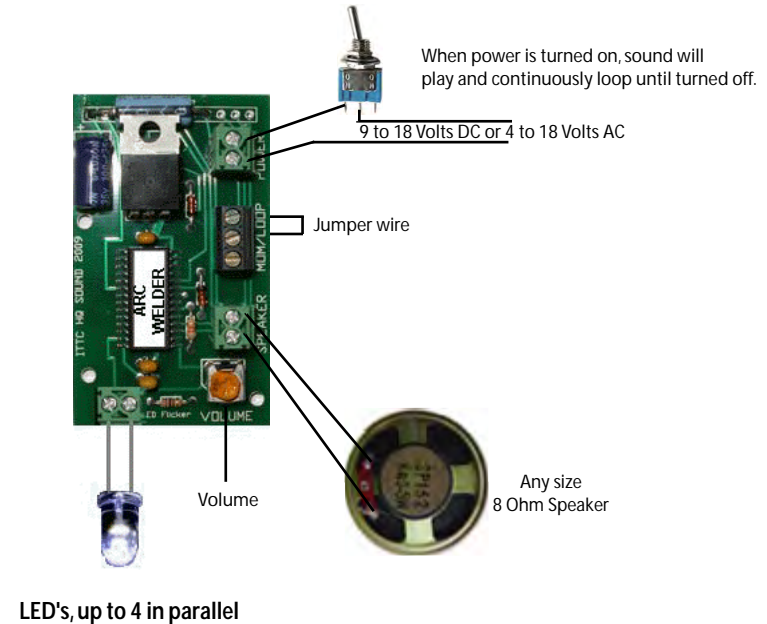
Typical Applications

Be Careful not to mount circuit board on a conductive surface such as metal. Circuit damage will result.

Play one time and turn off.



Looping continuous play



You can use 3mm, or 5mm LED's, and up to 4 in parallel.

We have found that the long LED lead can go to the left terminal or right terminal on the sound module, however it may work better in one direction than the other. Try it both ways to see which is best for your application. Even though the LED's we supply all appear CLEAR, they display when on, at the color you ordered.